



937 235-5050

3943 Old Troy Pike, Riverside, Ohio 45404

[Fairygodmothercreations.com](http://Fairygodmothercreations.com)

# Simple Bear Shorts and Shirt

## Materials For Shorts:

Fabric: 24" x 13"  
Matching Thread  
8" piece of 1/8" or 1/4" elastic (for waist)  
Pattern for Simple Bear Shorts

## Directions:

Fold the fabric in half lengthwise. Place pattern piece on doubled fabric. Pin and cut.

Each piece is a pant leg. Fold right sides together and sew the inside leg seam from A to B (leaving the crotch area open).

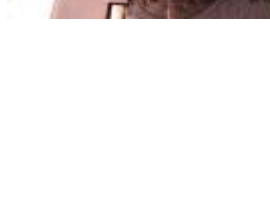
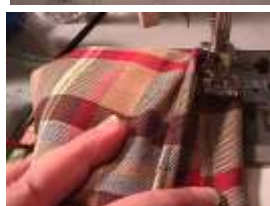
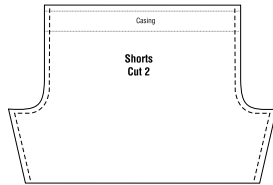
Turn one leg right-side out and slip it into the other leg so that they are right-sides together. Pin in place, matching seams. Sew crotch from top and all the way to the other side.

Fold up bottom edges of each pant leg and stitch to create hem.

Turn pants right-side out.

Fold in 1/8" along top and stitch to clean up top edge. Then fold in again 1/2" and stitch, making a casing for the elastic. Make sure you leave an opening to slip the elastic in.

Pull elastic through the casing and stitch the two ends together. Close off casing by stitching the opening closed.



## Materials For Shirt:

Fabric: 17" x 11"  
Matching Thread  
Pattern for Simple Bear Shirt

## Directions:

This pattern calls for making the shirt twice. One will become the lining. This will reduce the amount of finishing needed.

Cut pattern pieces as directed. Right sides together, sew front pieces to back pieces at shoulder.

On one long side of each sleeve piece, run a gather stitch. Right sides together, pin sleeve along front and back arm hole for both the shirt and the lining, gathering as needed to fit. Sew sleeve pieces in place.

Right sides together, pin the shirt and lining pieces together. Sew the two pieces all around starting at the lower back. LEAVE the BACK bottom open. You will need to be able to turn it.

Turn right-side out and press to get crisp edges. Fold front section over and sew sleeve and sides closed. Slip-stitch the bottom back closed and add snaps, buttons or velcro to the front to fasten shirt closed.

